

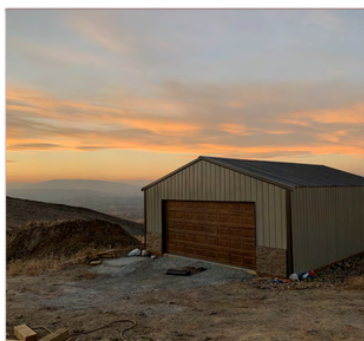
Your Building. Your Way.

HANSEN BUILDINGS



WHAT MAKES US BETTER?

- We guarantee the lowest priced kits with the same quality and features as competitors.
- Step by step instructions in a fully illustrated manual and stamped engineered plans included.
- Unlimited building customizations – Change your design, style and colors as many times as you like.



19-0913F



18-0714

WHAT WE DO:

- Educate our customers on pole building construction.
- Use our experience to provide you with the best customer service.
- Provide technical support.

POST FRAME

BUILDING KITS

Residential ✓

Agricultural ✓

Commercial ✓



TOLL FREE :
866.200.9657

www.HansenBuildings.com

THE ULTIMATE POST FRAME BUILDING EXPERIENCE™

1. THE HANSEN DIFFERENCE

WARRANTY 2
 CONSTRUCTION MANUAL 2
 CUSTOM POLE SPACING 2
 DO-IT-YOURSELF 3
 ACH DISCOUNT 4
 WHAT WE DO 5
 DOUBLE TRUSS SYSTEM 6
 POWDER COATED SCREWS 12
 SCREWDRIVER BITS 12
 PURLINS & GIRTS: FLAT VS ON EDGE 15
 COMMERCIAL WALL GIRTS 15

2. COMPONENTS

GLULAM COLUMNS 11
 ROOF AND WALL STEEL 12
 DRIP STOP 12
 WETSET BRACKET 13
 CLOSURES 15

3. DESIGN

ROOFING OPTIONS 8
 SIDING OPTIONS 9-10
 OVERHANGS 14
 EAVELIGHTS 14
 TRANSLUCENT RIDGE CAP 14
 WINDOWS 16
 ENTRY DOORS 16
 DUTCH DOORS 17
 HORSE STALL SYSTEMS 17
 FLOOR PLANS AND ELEVATION DRAWINGS 18
 COIL ROLL UP DOORS 19
 OVERHEAD DOORS 19
 SLIDING DOORS 19
 LOFTS 20
 CUPOLA AND WEATHERVANES 21

4. BUILDING EXAMPLES

GARAGES 22
 SHOPS 23
 CARPORT/RV STORAGE 24
 AGRICULTURAL 25
 COMMERCIAL 26
 RESIDENTIAL 27
 CUSTOM AND SPECIALTY 28
 HORSE BARNs 29
 HORSE ARENAS 30

WHAT SETS HANSEN BUILDINGS APART?

- CALL AND TALK TO A BUILDING DESIGNER DIRECTLY
- 3' X 2' PRINTED BUILDING PLANS WITH DETAILS
- ENGINEER SEALED PLANS (TYPICALLY NEEDED FOR LOCAL PERMITS)
- PLANS CAN BE PREVIEWED AND "APPROVED" ONLINE
- FULLY COLORED, STEP-BY-STEP CONSTRUCTION MANUAL (WITH PHOTOS)
- UNLIMITED FREE TECHNICAL SUPPORT
- ABILITY TO REPORT DAMAGED/MISSING MATERIALS ON-LINE
- THE INDUSTRY'S ONLY LIMITED LIFETIME STRUCTURAL WARRANTY
- NO UNTREATED WOOD EXPOSED TO THE WEATHER
- INSULATED, PAINTED, STEEL ENTRY DOORS WITH STEEL FRAME

WARRANTY

OUR GOAL AT HANSEN BUILDINGS IS TO PROVIDE YOU WITH A HIGH-QUALITY BUILDING KIT AT A PRICE WITHIN YOUR BUDGET.

HANSEN BUILDINGS IS THE ONLY POLE BUILDING KIT PROVIDER TO OFFER A WRITTEN LIMITED LIFETIME WARRANTY TO OUR CUSTOMERS

SCAN FOR THE INDIVIDUAL PRODUCT WARRANTIES OFFERED BY HANSEN



WHAT IS INCLUDED:

- STRUCTURAL BUILDING COLUMNS
- PRE-FABRICATED ROOF TRUSSES
- LATERAL AND VERTICAL FORCE-RESISTING SYSTEM MEMBERS



EACH WARRANTY IS INDIVIDUALLY NUMBERED, AND THE PURCHASER MUST COMPLETE THE REGISTRATION CERTIFICATE FOR VALIDATION

OUR DESIGN PROCESS AT HANSEN ALLOWS CLIENTS TO ADJUST THE SPACING OF THEIR COLUMNS, NEGATING DESIGN ISSUES THAT ARISE FROM CERTAIN POLE PLACEMENTS.

THESE ADJUSTMENTS ALLOW YOU TO GET THE MOST BUILDING FOR YOUR INVESTMENT

CUSTOM POLE SPACING

HELPFUL WHEN:

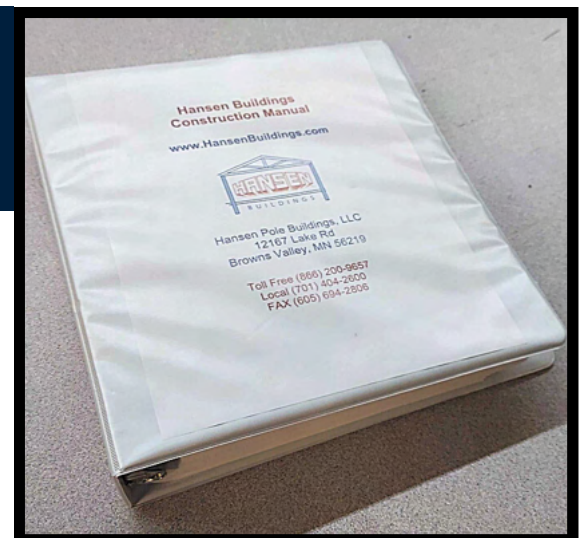
- TAKING ADVANTAGE OF THE VIEW WITH PERFECTLY PLACED WINDOWS
- DESIGNING CUSTOM HORSE STALLS
- REARRANGING DOORS AND ENTRY WAYS
- GREAT WAY TO SAVE MONEY

CONSTRUCTION MANUAL

EVERY HANSEN BUILDING KIT INCLUDES A FULLY ILLUSTRATED CONSTRUCTION MANUAL

THESE STEP-BY-STEP INSTRUCTIONS CAN SAVE COUNTLESS HOURS OF GRIEF, WASTED MATERIALS, AND UNNECESSARY WORK.

OUR CONSTRUCTION MANUAL PROVIDES THE PERFECT LEVEL OF SUPPORT FOR DIY BUILDERS OR THE ABILITY TO FOLLOW ALONG WITH YOUR BUILD WHEN HIRING CONTRACTORS



DO-IT-YOURSELF

OUR BUILDINGS ARE DESIGNED FOR THE DO-IT-YOURSELF PERSON.

MOST OF OUR CLIENTS DO THEIR OWN CONSTRUCTION.

BENEFITS OF DIY

- SAVES 50%-100% OF THE COST OF THE KIT IN LABOR
- NO NEED TO WAIT FOR A BUILDER TO BECOME AVAILABLE
- ELIMINATES THE RISK OF BUILDER TAKING \$ AND RUNNING
- NO NEED TO SPEND TIME VETTING A BUILDER
- PRIDE IN A JOB WELL DONE BY YOU



WE BELIEVE OUR DRAWINGS AND INDUSTRY-LEADING CONSTRUCTION MANUAL ARE CLEAR ENOUGH TO MAKE THE TASK RELATIVELY SIMPLE EVEN FOR THE FIRST-TIME BUILDER. KEEP IN MIND, THIS IS A MATERIAL KIT, NOT A COMPLETELY PRE-FABRICATED STRUCTURE. ASSEMBLY, INCLUDING MEASURING AND CUTTING, WILL BE REQUIRED. YOU WILL BE REQUIRED TO HAVE (OR BORROW OR RENT) VARIOUS HAND TOOLS.

DIY CLIENTS TESTIMONIALS

Reggie C - Lucas, IA

"The satisfaction of walking into a building built with my own hands everyday is incredibly fulfilling in terms of what I value in this life (hard work, commitment, learning new things, etc.)."

Kevin B - Williamsburg, MI

"My brother helped me set the poles and hang the roof steel. All the rest was solo. By the way, I'm 63 years old."

Technical assistance available 24 hours a day via email to:
TechSupport@HansenPoleBuildings.com

ACH DISCOUNT

5% OFF



SCAN FOR MORE
INFORMATION



YOU WILL RECEIVE 5% OFF YOUR NEW POLE BARN WHEN YOU USE THIS FORM OF PAYMENT.

What is ACH?

THE AUTOMATED CLEARING HOUSE NETWORK, OR ACH, IS A NETWORK USED FOR ELECTRONICALLY MOVING MONEY BETWEEN BANK ACCOUNTS ACROSS THE UNITED STATES.

HOW DOES IT WORK?

1. THE CLIENT PROVIDES THE AMOUNT DUE.
2. THE CLIENT STARTS PAYMENT BY PROVIDING AUTHORIZATION AND NECESSARY BANKING INFORMATION, OR ACH FILES TO THE MERCHANT.
3. THE ODFI DEBITS THE CLIENT'S ACCOUNT AND SENDS THE ACH FILES TO THE FEDERAL RESERVE SYSTEM.
4. THE FEDERAL RESERVE ROUTES THE ACH FILES TO THE RECEIVING BANK.
5. THE RDFI PROCESSES THE PAYMENT.
6. THE FUNDS CLEAR AND HIT THE RDFI, AND WE RECEIVE THE FUNDS.



WHAT WE DO

We provide custom-designed pole-building kits from America's most trusted suppliers at volume pricing

Each building is structurally engineered to your specific local building load requirements

Materials delivered from regional locations (typically within 100 miles or less of your job site) directly to your site

Over 40 years of post frame experience and 20,000+ buildings

INCLUDED IN EVERY KIT:

WRITTEN LIMITED LIFETIME WARRANTY
COVERING: STRUCTURAL BUILDING COLUMNS
PRE-FABRICATED ROOF TRUSSES
MAIN WINDFORCE-RESISTING SYSTEM MEMBERS

ENGINEER SEALED PLANS

DETAILED 3' X 2' PRINTED PLANS WITH DETAILS

UNLIMITED FREE TECH SUPPORT VIA EMAIL

YOUR BUILDING. YOUR WAY.

WIDTH: ANY SIZE UP TO 80' CLEARSPAN (WITHOUT INTERIOR POSTS)

LENGTH: AS LONG AS YOUR PROPERTY AND POCKETBOOK ALLOW

OVERHANGS: 1 SIDE, 2 SIDES, 3 SIDES OR 4- IN YOUR CHOICE OF SIZE!

DOOR LOCATIONS: ANYWHERE (STRUCTURALLY ALLOWABLE)

THEN ADD THE FEATURES YOU WANT:

**WAINSCOT-EAVELIGHTS-COMMERCIAL GIRTS-LOFTS-CARPORTS
FLOORPLANS-CUPOLAS-WEATHERVANES-VENTED RIDGE
HORSE STALL KITS-DUTCH DOORS-INTERIOR LINER PANELS
RESIDENTIAL AND COMMERCIAL DOORS
SLIDING DOORS- SHINGLED ROOFS-WOOD AND VINYL SIDING**

OUR DOUBLE-TRUSS SYSTEM



ONE OF THE MANY THINGS THAT SETS HANSEN BUILDINGS APART FROM COMPETITORS IS OUR USE OF THE “DOUBLE TRUSS SYSTEM”. THIS TECHNIQUE ALLOW FOR TWO INDIVIDUAL TRUSSES TO BE THOROUGHLY PAIRED TOGETHER TO WORK AS A SYSTEM, BEFORE NOTCHING IT INTO YOUR SIDEWALL COLUMNS- ADDING TO YOUR BUILDING’S STRENGTH AND STABILITY.

EFFICIENT DESIGN

DOUBLE TRUSSES BEAR DIRECTLY ON THE COLUMNS
PREVENTING WEAK CONNECTION POINTS

EASIER TO CONSTRUCT

PRECUT, NO NEED TO CALCULATE ANGLES AND LENGTH
REDUCED BRACING & FEWER PIECES TO INSTALL

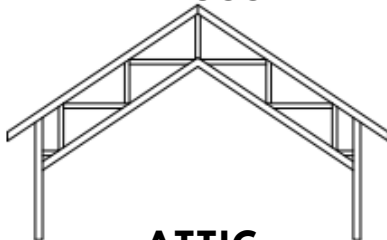
SAFER

TWO TRUSSES CONNECTED TO EACH OTHER SHARE THE LOAD, ELIMINATING THE
PROBABILITY OF ROOF FAILURE

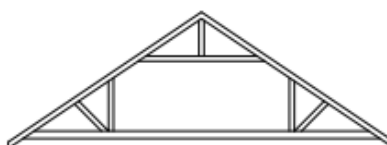
STANDARD GABLE TRUSS



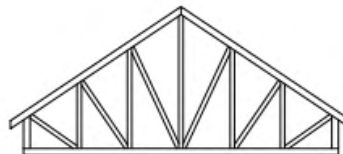
PARALLEL CHORD TRUSS



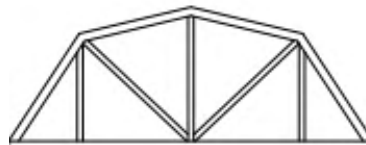
ATTIC TRUSS



ENERGY HEEL TRUSS



GAMBREL TRUSS



SCISSOR TRUSS



ROOF AND WALL STEEL



HANSEN BUILDINGS USE 29 GAUGE INDUSTRIAL QUALITY FULL HARD STEEL. ALL COLORED STEEL ROOFING AND SIDING IS FASTENED WITH A COLOR MATCHED 1 1/2" LONG POWDER COATED SCREWS- NO PAINT TO CHIP OFF

TENSILE STRENGTH OF 80,000 PSI

**LOW LIFECYCLE COSTS:
NO SIDING TO PAINT OR
SHINGLES TO REPLACE**

**WEATHER RESISTANT:
HOLDS UP TO SNOW, WIND,
HAIL AND SUN**

**GREEN PRODUCT:
ENERGY STAR RATED**



29 GAUGE STEEL COLORS

*Brite Red	Black
*Brite White	*White
*Lt. Stone	*Brick Red
Slate	*Evergreen
Brown	*Clay
*Royal Blue	Burgundy
*Tan	*Lt. Gray
Charcoal	Gallery Blue

26 GAUGE STEEL COLORS

*White	*Lt. Stone
Brown	Charcoal
*Evergreen	*Tan
*Lt. Gray	*Brick Red

NOTE: COLOR SHOWN MAY VARY DUE TO PRINTING PROCESS. FOR EXACT COLOR MATCH, PLEASE REQUEST A METAL COLOR SAMPLE.

WE RESERVE THE RIGHT TO SUBSTITUTE EQUIVALENT PRODUCTS

***ENERGY STAR COLORS**

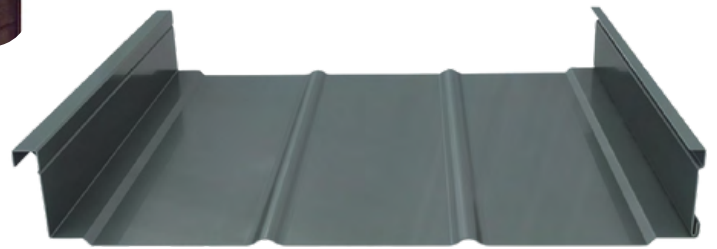
ROOFING OPTIONS



ROOFING CAN BE EITHER SNAP TOGETHER SYSTEMS OR MECHANICALLY FASTENED PANEL

STANDING SEAM (SEAMLESS) STEEL

STANDING SEAM PREMIUM METAL ROOFING DESIGNED TO HIDE FASTENERS AND USING CONCEALED SIDE LAPS OR CLIPS.



COMPOSITION SHINGLES



AVAILABLE IN BLACK, BROWN, GRAY AND CHARCOAL

WARRANTY: MINIMUM 20 YEARS

SHINGLE OPTIONS INCLUDE ROOF SHEATHING AND FELT



ARCHITECTURAL SHINGLES



OTHER ROOFING OPTIONS AVAILABLE UPON REQUEST

WARRANTY: MINIMUM 25 YEARS

SHINGLE OPTIONS INCLUDE ROOF SHEATHING AND FELT

HANSEN BUILDING KITS

SIDING OPTIONS

FIBER-CEMENT SIDING

LOW MAINTENANCE SIDING RESISTANT TO ROTTING OR CRACKING, AND DAMAGE FROM RAIN AND HAIL. ALL FIBER-CEMENT SIDING COMES PRIMED READY TO BE PAINTED THE COLOR OF YOUR CHOICE. CONSIDERED INSECT RESISTANT.



VINYL SIDING

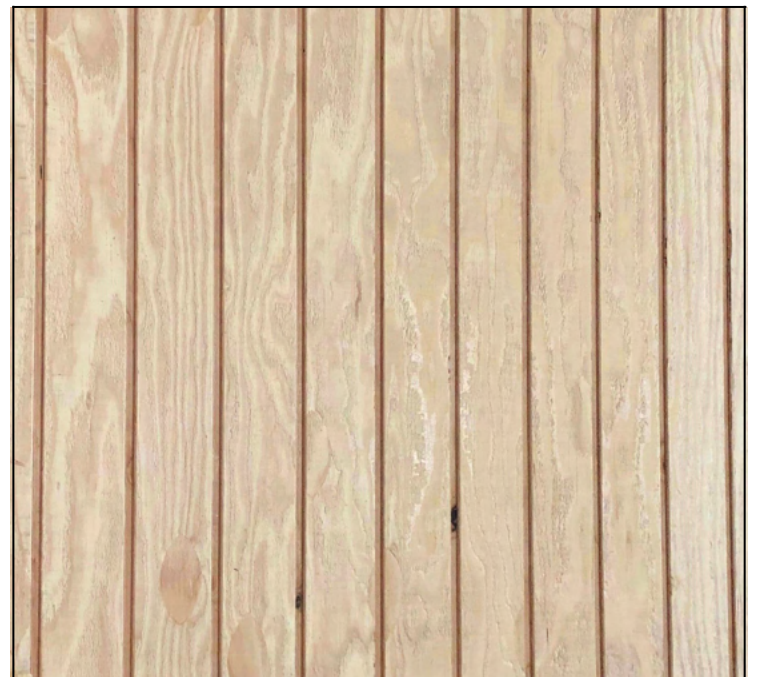
DELIVERS THE AUTHENTIC LOOK OF CAREFULLY PAINTED WOOD. HEAVY DUTY THICK PANELS PROVIDE EXTRA STRENGTH AND DURABILITY. LIMITED LIFETIME WARRANTY

T1-11 SIDING

AVAILABLE IN CERTAIN MARKETS AS EITHER PLYWOOD OR OSB (ORIENTED STRAND BOARD).

THE PLYWOOD PRODUCT IS A BIT MORE EXPENSIVE BUT A SUPERIOR PRODUCT TO THE OSB DUE TO ITS GREATER DURABILITY AND EXPANDED FINISHING OPTIONS. PLYWOOD T1-11, CAN BE STAINED FOR A NATURAL WOOD LOOK OR PRIMED AND PAINTED.

OSB PRODUCTS ARE MADE OF WOOD FLAKES, STRANDS AND WAFER TREATED WITH A BINDING RESIN AND THEN SEALED TOGETHER USING PRESSURE AND HEAT. OSB T1-11 CANNOT BE STAINED; IT MUST BE PRIMED AND PAINTED



SIDING OPTIONS



T1-11 WITH BATTEN

VERTICAL DESIGN CREATED BY USING T1-11 SHEETS WITH 1X4 BOARDS (BATTENS) COVERING THE JOINTS.

WAINSCOT

TYPICALLY CREATES A TWO TONE WALL AND IS USED PRIMARILY AS AN AESTHETIC FEATURE.

USING STEEL FOR WAINSCOT PROVIDES EASE OF REPLACEMENT FOR DAMAGED OR DENTED PANELS.



SIDING EXAMPLES



POWDER COATED SCREWS



POWDER COATED SCREWS ARE UNIQUE TO HANSEN BUILDINGS AND USED TO FASTEN THE STEEL ROOFING AND SIDING TO THE FRAMING

BUILT-IN GROMMET AND WASHER SEALS AND ELIMINATES LEAKS

**HIGHEST PULLOUT VALUES IN THE INDUSTRY!
PULLOUT STRENGTH=900LBS MINIMUM**

POWDER COATED TO MATCH STEEL

SCREWDRIVER BITS



THESE MAGNETIC DRIVERS ARE SPECIALLY MADE FOR USE WITH OUR POWDER COATED SCREWS.

THE "HEX" PART OF THE DRIVER IS ENGINEERED TO GRIP ON THE FLAT PART OF THE SCREWHEAD INSTEAD OF THE CORNERS.

THIS VASTLY REDUCES CHANCES FOR DAMAGE TO SCREW HEAD AND PAINT DURING INSTALLATION.

BOTH LONG AND SHORT DRIVERS ARE AVAILABLE FOR PURCHASE OR COME WITH THE PURCHASE OF A HANSEN KIT.

STRONG-DRIVE® TIMBER SCREWS



STRONGER DESIGN SHEAR VALUES THAN 1/2" LAG BOLTS

**COATING PROCESS PROTECTS AGAINST CORROSION, EVEN IN PRESSURE TREATED WOOD
GUARANTEED NOT TO RUST OR STREAK FOR THE LIFE OF THE PRODUCT**

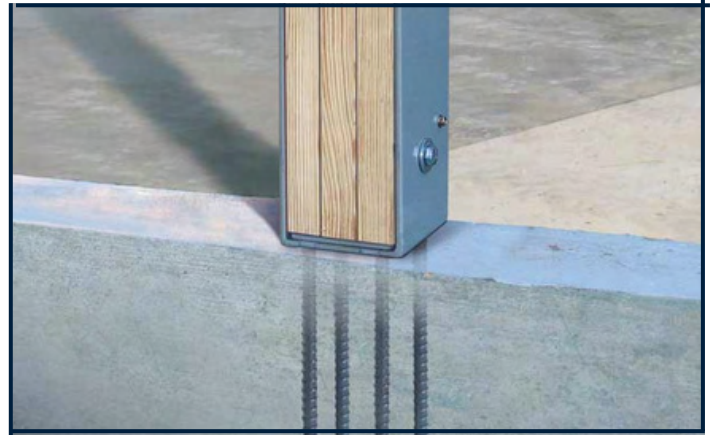
BUILT IN WASHER HEAD ELIMINATES THE NEED FOR ADDITIONAL WASHER

NO PRE-DRILLING NEEDED, EASY TO INSTALL THROUGH TRUSS PLATE

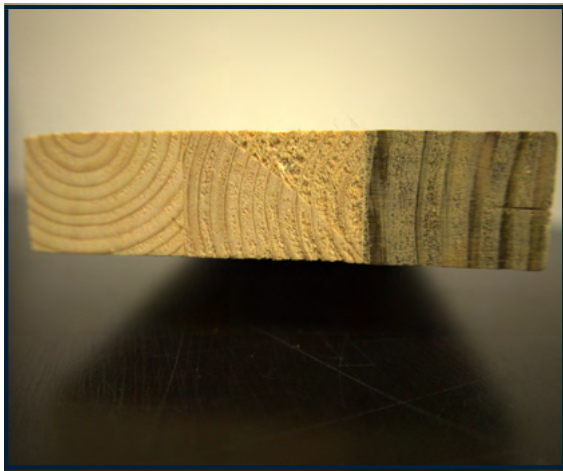
IBC/IRC CODE COMPLIANT

WET SET BRACKETS

CODE APPROVED WET SET BRACKETS ARE A HEAVY-DUTY ENGINEERED ANCHORING SYSTEM ATTACHING A WOOD COLUMN TO CONCRETE FOUNDATIONS FOR YOUR POST-FRAME BUILDING



GLULAM COLUMNS



GLULAM IS A STRUCTURAL ENGINEERED WOOD COLUMN COMPOSED OF WOOD LAMINATIONS, OR "LAMs", BONDED TOGETHER WITH DURABLE, MOISTURE-RESISTANT ADHESIVES.

TREATED TO RESIST SEVERE WEATHER, INSECTS, DECAY AND SUNLIGHT.

BENEFITS:

**LIGHTER WEIGHT (ABOUT HALF OF A SOLID COLUMN)
EASIER TO MOVE ON A JOBSITE AND TO STAND UPRIGHT**

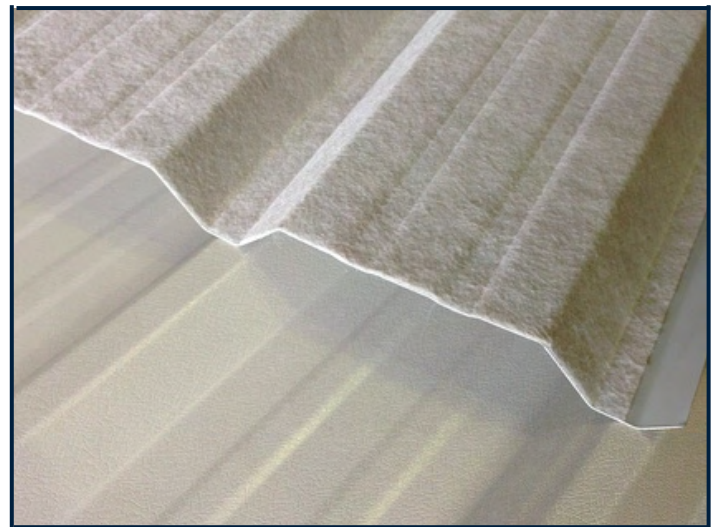
WHEN THE TEMPERATURE AND HUMIDITY CONDITIONS REACH THE DEW POINT, MOISTURE CAN CONDENSE ON THE UNDERSIDE OF STEEL ROOFING. THIS CONDENSATION HAS THE POTENTIAL TO CAUSE WATER DAMAGE AND OTHER PROBLEMS INSIDE OF POLE BUILDINGS.

DRIP STOP IS FELT-LIKE, AND APPLIED IN THE FACTORY BEFORE SHIPMENT.

DURABLE: NOT SUSCEPTIBLE TO RIPPING, TEARING OR DETERIORATION.

EASIER TO INSTALL. NO SEAMS TO TAPE.

DRIP STOP



OVERHANGS



HOW DO YOU CHANGE THE LOOK OF MOST BUILDINGS FROM "INDUSTRIAL" TO "RESIDENTIAL? OVERHANGS.

- ELIMINATES REPEAT PAINTING
- AFFORDS WEATHER PROTECTION FOR DOORS
- MOVES RAIN RUN-OFF OR SNOW FALL-OFF AWAY FROM THE BUILDING, KEEPING IT CLEANER
- "LEVEL RETURN" FOR AN ADDED TOUCH OF CLASS

INCLUDES: STEEL TRIM(WITH STEEL ROOFING) MATCHED TO ROOF COLOR.

**OPEN OR ENCLOSED
ENCLOSED OVERHANGS FEATURE
COLOR MATCHED VENTED ALUMINUM
SOFFIT.**

BUILDING WITH OVERHANGS

BUILDING WITHOUT OVERHANGS



ADD SOME NATURAL LIGHT:

EAVELIGHTS

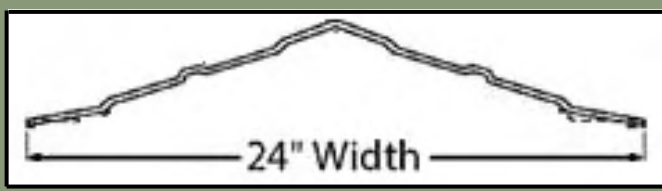


MADE FROM WEATHER RESISTANT POLYCARBONATE. AVAILABLE IN SOFT WHITE THESE EAVELIGHTS WILL NOT YELLOW IN HARSH SUN AND ARE RECYCLABLE. PANELS COME IN 36" WIDTHS.

TRANSLUCENT RIDGE CAP



ADDED TO THE BUILDING PEAK, TRANSLUCENT RIDGE CAPS WON'T CRACK, SHATTER OR YELLOW.



BUILDING FEATURES

PURLINS & GIRTS: FLAT VS ON EDGE

STANDING ON EDGE, THE SECTION MODULUS (SM), WHICH IS USED TO CALCULATE STRENGTH IN BENDING, IS 366% **GREATER** FOR A 2X6 ON EDGE THAN FLAT

IMAGINE CROSSING A STREAM

WITH A 2X6 LAID FLAT, YOU GET WET FEET. STOOD ON EDGE, DRY FEET



COMMERCIAL WALL GIRTS

COMMERCIAL WALL GIRTS (OFTEN CALLED BOOKSHELF GIRTS) IS A TECHNIQUE WHICH PUTS THE WALL GIRTS BETWEEN THE POSTS, LAID FLAT, 2' ON CENTER (O.C.) HORIZONTALLY SPACED.

INSTEAD OF THE TYPICAL GIRT METHOD WHICH PUTS THEM ON THE OUTSIDE OF THE POSTS.

- CREATES A MINIMUM 6" INSULATION CAVITY
- EASIER TO FINISH AND INSTALL, DRYWALL READY
- GIVES MORE STRENGTH TO WALL IN BETWEEN POSTS

CLOSURES

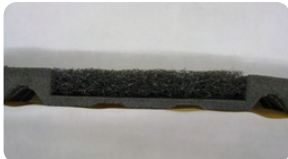
ALL CLOSURE STRIPS ARE 3' LONG AND HAVE ADHESIVE ATTACHED



INSIDE CLOSURE:
USED ON TOP OF FASCIA BOARDS ON ENCLOSED SIDEWALL OVERHANGS



OUTSIDE CLOSURE:
USED BETWEEN ROOFING STEEL AND RIDGE CAPS OR ENDWALL FLASHING



VENTED CLOSURE:
LOCATED UNDER RIDGE CAP. ECONOMICALLY VENT TRAPPED AIR AND CONDENSATION-WHILE KEEPING OUT BUGS AND WEATHER

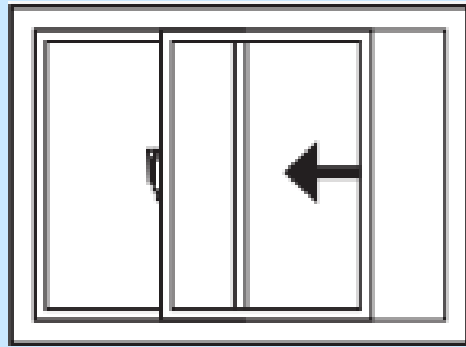
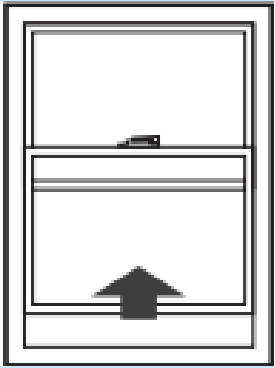
VENTED RIDGE

COMBINED WITH ENCLOSED VENTED OVERHANGS, A VENTED RIDGE PROVIDES PROPER VENTILATION FOR ANIMALS AND HEATED STRUCTURES.

A VENTED RIDGE IS A REQUIREMENT FOR DEAD ATTIC SPACE WHILE HELPING TO PREVENT BUILD UP OF MOLD AND MILDEW.



WINDOWS



**MOST
ECONOMICAL
SIZES:**

**3'X3' SLIDER
4'X3' SLIDER
3'X4' SINGLE
HUNG**

**ENERGY EFFICIENT IN ANY CLIMATE: ENERGY STAR CERTIFIED
LOW MAINTENANCE VINYL CONSTRUCTION INSIDE AND OUT
EASY INSTALLATION: WINDOWS INCLUDE A NAILING FLANGE
WITH J-CHANNEL FOR EASY TRIMMING OF THE SIDING TO THE
WINDOW
INTERGRATED WINDOW GRIDS (OPTIONAL)**

SIZES RANGE FROM 2'X2' UP TO 6'X5'

**CASEMENT,
AWNING & DOUBLE
HUNG WINDOWS AT
NOMINAL
ADDITIONAL
INVESTMENT**

COMMERCIAL ENTRY DOORS



FULL 1-3/4" THICK PANEL WITH 26 GAUGE SKINS

**HEAVY DUTY 16 GAUGE STEEL FRAME, ALL STEEL SKIN,
PRE-HUNG 4-WAY UNIVERSAL SWING**

FULL PERIMETER WEATHER STRIPPING

**POLYURETHANE FOAM CORE WHICH REDUCES SOUND AND
POSSESSES SUPERIOR INSULATING QUALITIES, R-13**

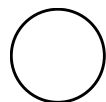
**NYLON LOCKSET INSERT ELIMINATES LOCKSET LOOSENING-
NO WOOD BLOCK TO DETERIORATE OR ABSORB MOISTURE**

**FRAME HAS COMMON HEADER/THRESHOLD AND NON-
NAILING JAMB; MEETS HANDICAP SPECIFICATIONS**

SIZES AVAILABLE

SINGLE ENTRY	DOUBLE DOORS
2'8" X 6'8"	6' X 6'8"
3' X 6'8"	8' X 6'8"
3'6" X 6'8"	
4' X 6'8"	

**COLORS
AVAILABLE:**



**POLAR
WHITE**



**CHOCOLATE
BROWN**

DUTCH DOORS



PRE-ASSEMBLED DOOR PANELS WITH MATCHING CROSSBUCKS.

DOOR PANEL FRAME FORMED FROM A SINGLE SHEET OF 16 GAUGE STEEL, ASSEMBLED OVER 29 GAUGE FLAT STEEL SHEETS.

HEAVY STEEL HINGES ARE POWDER COAT PAINTED TO MATCH THE DOOR

DESIGNED WITH HORSE SAFETY IN MIND

HARDWARE KITS INCLUDES:

- HINGES,
- BARN LATCH
- BARREL BOLT
- CATCH KIT
- SCREW PACKAGE

SIXTEEN POWDER COAT COLORS AVAILABLE AS WELL AS ADDITIONAL PAINTED COLORS TO MATCH

HORSE STALL SYSTEMS

EASY TO ASSEMBLE COMPONENTS

GRILL TUBES PLACED 4" CENTERS FOR MAXIMUM VISIBILITY AND VENTILATION

WOOD EDGES CONTAINED BY CHANNELS FOR STENGTH AND TO PROTECT FROM CRIBBING

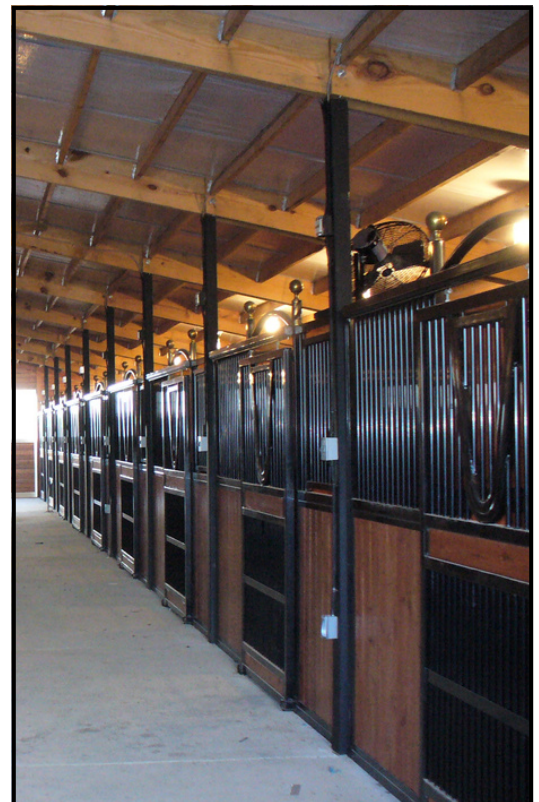
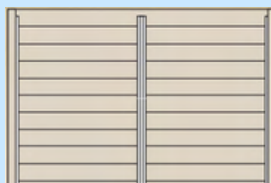
DOOR IS QUIET ROLLING WHEN MOUNTED ON OPTIONAL COMBO TRACK

ALL COMPONENTS ARE FINISHED TO PROVIDE A LONG, MAINTENANCE-FREE LIFE

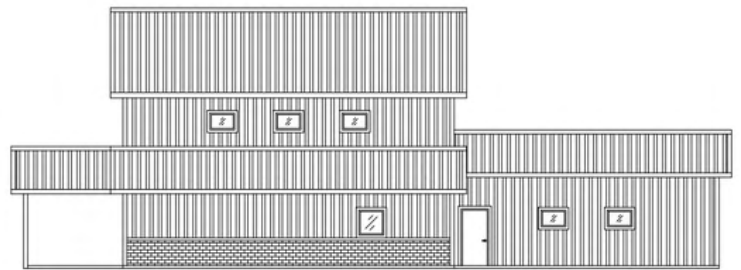
UTILIZES STANDARD LUMBER



BUILD ANY SIZE- ANY COMBINATION STALL TO FIT YOUR NEEDS



FLOORPLANS AND ELEVATION DRAWINGS



HANSEN BUILDINGS IS PROUD TO OFFER CUSTOM BARNDOMINIUM, SHOUSE AND POST FRAME HOME FLOOR PLANS AND ELEVATION DRAWINGS

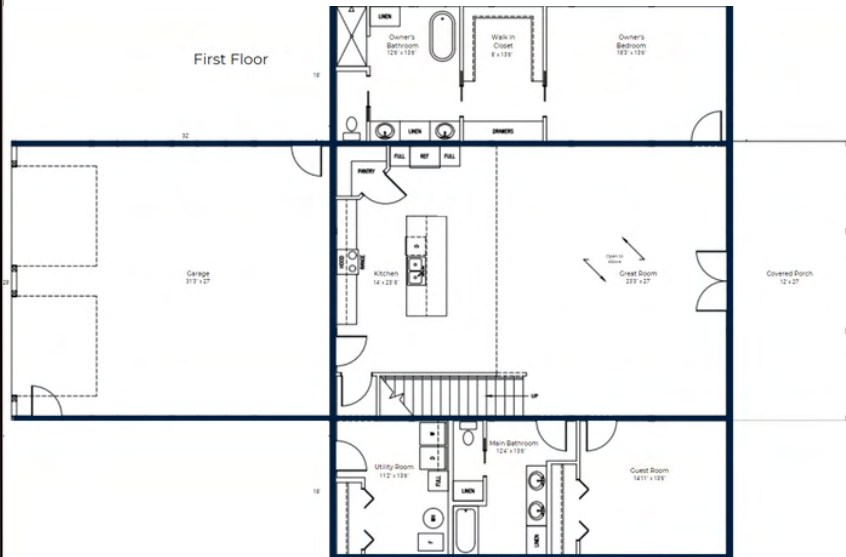
BRING YOUR DESIGN IDEAS TO LIFE WITH THE HELP OF A HANSEN FLOORPLAN SPECIALIST.

MAKE YOUR OWN CUSTOM LAYOUT CHANGES ON THE FLY WHILE YOU SPEAK DIRECTLY WITH YOUR SPECIALIST

PLANS ARE COMPLETED THROUGH ONLINE COMMUNICATION TO ENSURE YOUR WANTS ARE REPRESENTED IN YOUR PLANS.

UPGRADE YOUR PLANS TO INCLUDE ELECTRICAL AND PLUMBING LAYOUTS.

WHAT YOU RECEIVE:
 PDF COPIES OF YOUR FINISHED FLOOR PLANS
 ELEVATION DRAWINGS DEPICTING THE
 OUTSIDE OF YOUR BUILDING.
 FLOOR PLANS ARE NOT ENGINEER SEALED



WHEN YOU INVEST IN YOUR NEW HANSEN POLE BUILDINGS KIT WITH FLOOR PLAN PURCHASE, YOU WILL RECEIVE A DISCOUNT OF \$695

*This offer only applies when you purchase any floor plan package before any Hansen Buildings Kit.

OVERHEAD DOORS

COMMERCIAL AND RESIDENTIAL

FACTORY FINISH PAINTED (NOT MERELY PRIMED)

FULLY TRIMMED

HI-LIFT TRACK AVAILABLE

CHAIN HOIST AND DOOR OPENERS AVAILABLE

WHITE



SANDSTONE



ALMOND



DARK BROWN



COIL ROLL UP DOORS ALSO AVAILABLE



SLIDING DOORS



08-0211



08-0219



04-1223

PAINTED VERTICAL RAILS

ALL STEEL CONSTRUCTION FOR YEARS OF MAINTENANCE FREE USE

SIZES UP TO 36' WIDE AND 12' TALL

WORKS WITH ANY TYPE OF SIDING

LOFTS

WHAT EXACTLY IS A LOFT?

Lofts are described in a variety of forms but are typically Attic spaces, storage and secondary floors that can be designed for many uses, depending upon your goals and available space.

TRUSSED LOFT FLOOR

- STRONGER, STIFFER FLOORS (MINIMIZING UNCOMFORTABLE 'BOUNCE')
- CONSISTENT FLOOR THICKNESS
- MINIMIZES OR ELIMINATES NEED FOR INTERIOR COLUMNS AND BEARING WALLS (CAN CLEAR SPAN 50 FEET OR MORE)
- DUCTWORK AND PLUMBING ALL CONTAINED WITHIN TRUSSES (PROVIDES FOR A FLAT, LEVEL CEILING BELOW)
- FAR FEWER PIECES REQUIRED (SPEEDING CONSTRUCTION PROCESSES)
- SPANS UP TO 30 FEET OFTEN HAVE 3-1/2" NAILING SURFACES
- NO DRILLING REQUIRED TO INSTALL PIPES AND WIRING
- IDEAL FLOOR DESIGN FOR RESIDENTIAL BUILDINGS



*Lower installation costs but higher material costs per square foot

COLUMN SUPPORTED FLOOR



- FRAMED WITH DIMENSIONAL LUMBER (2X6, 2X8, ETC.) CAN BE REQUIRED TO BE AS LITTLE AS 12 INCHES ON CENTER
- BEAM DIMENSIONS GREATER THAN JOISTS, LEAVING UNEVEN CEILINGS
- SUPPORT POSTS AND BEAMS OFTEN REQUIRED NO MORE THAN EVERY 15 FEET
- UNEVEN FLOOR SURFACES AND SQUEAKS CAN RESULT FROM DIFFERENTIAL DRYING OF LARGE DIMENSION LUMBER
- IDEAL FLOOR WHEN INTERIOR COLUMNS ACCEPTABLE

*Higher installation costs but lower material costs per square foot

CUPOLA & WEATHERVANES



PRE-PAINTED STEEL
CONSTRUCTION

MATCHING STEEL COLORS
AVAILABLE

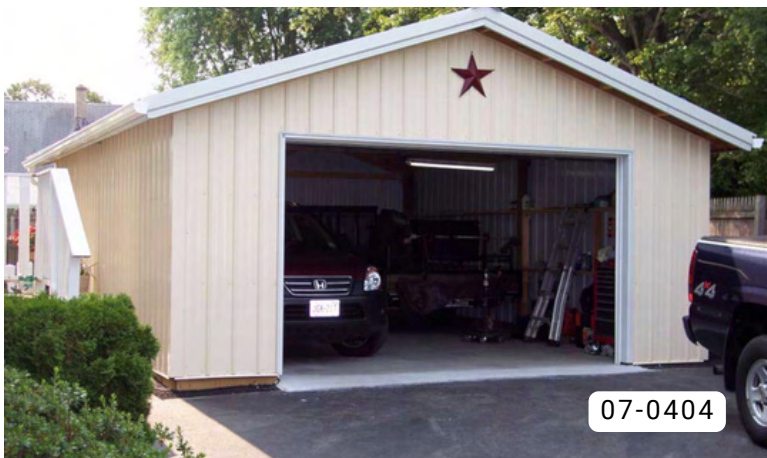
ALL METAL EDGES ARE
HEMMED

ROOF AND SIDES
INTERLOCK FOR
WEATHER TIGHT
CONNECTION

UNIVERSAL BASE AND
GLASS OPTIONS



GARAGES



SHOPS



CARPORTS AND RV STORAGE



AGRICULTURAL BUILDINGS



COMMERCIAL BUILDINGS



RESIDENTIAL BUILDINGS



CUSTOM AND SPECIALTY BUILDINGS



HORSE BARNS



HORSE ARENAS



Your Building. Your Way.

HANSEN BUILDINGS, LLC

Building Features

Today's Most Comprehensive, Yet Easy-to-Assemble Kit Package Includes These Important Features:

- Complete itemized material list and fully-illustrated Printed Construction Manual (also available online).
- Two sets of fully engineered sealed 24" x 36" CAD plans specific to YOUR building.
- All lumbered grade stamped - minimum standard, stud or #2
- 2 x 8 pressure treated splash planks - #2 & better.
- All kiln dried framing lumber (no shrinkage creating "rattling" from green lumber). **Wall girts & roof purlins over 8' span all 2x6 or larger.**
- Engineered prefabricated roof trusses.
- Interior trusses doubled, notched into columns and bolted or secured with ledgerlocks. **Standard Building Design incorporates Double Trusses.**
- No unsightly blocking required between truss pairs
- Trusses on each end - no rafters to cut
- All purlins and girts over 8' span are minimum 2" x 6"
- **29 gauge industrial quality full hard steel** - supports an amazing 236 lbs. PSF (over framing 24" o.c.)
- **All colored steel roofing and siding, fastened with color matched screws; 1-½" in length; powder coated screws** - no paint to chip off
- **Steel paint warranties available to best fit your needs and budget.**
- **Complete colored steel trim package includes: base, corners, eaves, gables, eavelights, overhead and entry doors and jambs, fascia and fly rafters**
- **Closed cell foam ridge and eave closures (UV resistant)**
- **Insulated commercial steel entry doors, in steel jambs (no wood to split), factory painted.**
- **All steel frame sliding doors (no wood to warp or twist, lightweight & durable)**



TOLL FREE: 866.200.9657

www.HansenBuildings.com